




## EUROPEAN HOUSE PLAN 2559-00685

SQ FT	BEDS	BATHS	1/2 BATHS	STORIES	CARS	WIDTH	DEPTH
782	2	1	0	1	0	24' 0"	44' 0"

PERSONAL RATING:   

PERSONAL NOTE:

Save Note

Add a note...

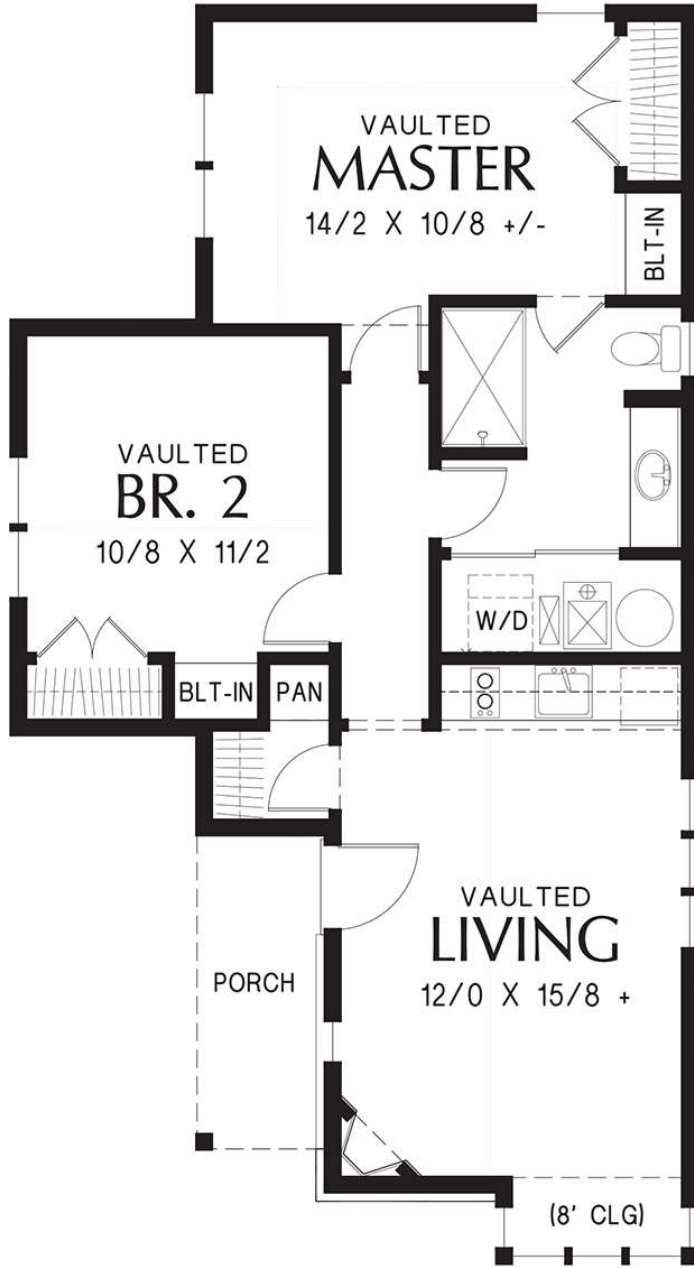


Exterior

Floor Plans

Images copyrighted by the designer. Photographs may reflect a homeowner modification.

# MAIN FLOOR



# FEATURES

BEDROOMS:	Master On Main Floor
KITCHEN:	Open Floor Plan
LAUNDRY:	Laundry Second Floor
OUTDOOR:	Front Porch

# DETAILS

TOTAL HEATED AREA:	782 sq. ft.
-- FIRST FLOOR:	782 sq. ft.
FLOORS:	1
BEDROOMS:	2
BATHROOMS:	1
WIDTH:	24ft.
DEPTH:	44ft.
HEIGHT:	18ft.-9in.
FOUNDATION:	Crawlspace Foundation Slab Foundation Basement Foundation
MAIN ROOF PITCH:	13:12
EXTERIOR FRAMING:	2x6

# FREQUENTLY ASKED QUESTIONS

## WHAT'S INCLUDED IN THESE PLANS?

- **Exterior Elevations** - all at 1/4" scale and - usually two sheets.

- **Floor Plans** - fully detailed with structural elements sized.
- **Cabinet Elevations** - often included on the floor plans.
- **Electrical Fixture Layout** - usually included on the floor plans.
- **Foundation Plan** - crawlspace is standard but basements & slabs are available.
- **Wall Section** - usually included on the foundation plans.
- **Building Sections** - usually at least three or four but most different conditions are illustrated.
- **Roof Plan** - 1/4" scale with structural sizes and often including both tile & comp/shake versions.
- **General Notes & Details** - includes structural and insulation specifications and standard details.